



## 河北万瑞医疗器械有限公司

地址：中国 河北省保定市徐水区华龙路357号

国内销售热线：0312-8990000

国外销售热线：0312-8773333

传真：0312-8973333

邮箱：vanry@hbvanrymed.com

网址：<http://www.wanruigroup.com>

<http://www.hbvanrymed.com>

服务热线：**400-853-7158**







# Company Profile

## 企业简介

Hebei Vanry Medical Devices Co.,Ltd is a professional hospital furniture manufacturer which specializes in R & D, Production and sale Hospital beds, Trolleys, Chairs, Tables, cupboards etc..., total more than 100 series. The factory was established since 2009, registered capital is thirty five Million Chinese yuan.

We are originally developed our own range of products by adopting International advanced technology, our production process was strictly comply with ISO 9001:2008 International quality management system to ensure products from materials purchasing, production process, quality control and inventory control was under monitoring. Our Brand "VANRY" ' was in the pursuit of high quality and spirit of perseverance requirements, based on innovation, research and development, combined with the leading production technology and customer demand, leading innovative medical device industry.

Through several years of unremitting efforts, Till now We have 3 large modern workshop, a complete set of first-class production equipment, testing equipment, excellent employee team, perfect environment of production and the consummation management system, Vanry is always developing continuously and producing and developing high value and high quality products that can meet the needs of Global Medical Equipment market, our products are not only sold all over China also exported to US, Japan, South Korea, South Asia, Africa, Middle east and more than 50 countries and area. We also set up our own trading company Kangbeihao Medical devices trading company in 2014.

We believe that Vanry is always in your side with elegant gesture !

河北万瑞医疗器械有限公司是一家集研发、生产、销售为一体的，专业从事医疗器械系列产品及相关产品的高科技企业。公司成立于2009年，注册资本3500万元，目前产品主要包括医用床、医用车、椅、台、柜等100多个品种系列。

公司以国际先进技术为依托，独创性地研发了自己特有的系列产品，生产流程全面严格执行ISO9001:2008国际质量管理体系，确保产品从原料采购、生产过程、到品质控制、库存管理都进行全程监控。以万瑞品牌独有的品质追求和执着的精神要求，在创新和研发的基础上，结合领先的生产技术和客户需求，引领医疗器械行业革新潮流。

多年不懈的努力，使得万瑞拥有大型现代化生产车间3座和整套高端生产、检测设备以及精良的员工队伍、一流的生产环境、和严谨高效的企业管理制度，并不断发展创新，研发设计符合全球医疗市场需求的高品质、高性能产品，全面覆盖中国大陆、外销欧美、日韩、东南亚、非洲、中东等50多个国家及地区。并于2014年，成功注册成立康贝豪国际贸易有限公司。

我们坚信，万瑞必将以优雅的姿态出现在您的身边。

注册资本，实力决定竞争力，万瑞以强劲的势头正不断提升铸就品牌辉煌。

# 5800万

Registered Capital :Thirty Five Million Rmb;  
Strength Determines The Competitiveness,  
Vanry Was Improving Brand On Service And  
Quality Constantly With Strong Momentum

# 300

 余亩

第一期项目建设占地面积，进一步延伸产业链，进一步深化产业层次，发挥集团优势。

The First Stage Of The Project Construction Covers An Area Of 300 Hectares, Further Extending The Industrial Chain And Deepening The Industrial Level, To Maximize Its Potential To The Fullest.

# 100

 多个

产品远销非洲、东南亚、中东等全球多个国家的大型医院、诊所、养老社区以及私人家庭。

More than 100 kinds of our Products were Exported to Africa, Southeast Asia, Middle East and other countries and area In Large Hospitals, Clinics, Pension Community And Private Family

# 80

 人

拥有世界一流的以工程师队伍为核心的产品设计研发中心，为生产世界一流的产品创造了必要条件

We Have 80 numbers of well educated engineers and First-Class Engineer Team and Product Design, Research And Development Center, Create The Necessary Conditions For Production Of World-Class Products.





# CONTENTS 目录

医疗床系列 Medical Nursing Bed Series

05-31

家居护理床系列 Home Care Bed Series

32-47

其它医疗辅具 Aids For Daily Living

48-57



- (1) 手术床 Operating Table
- (2) 检查床 Examination Bed
- (3) 转运车 Transfer Trolley
- (5) 医用车 Medical Trolley
- (6) 医用椅 Medical Chair
- (7) 医用柜 Medical Lockers
- (8) 过床餐桌 Over Bed Table
- (9) 床头柜 Bedside Locker
- (10) 其它附件 Other Enclosure





# Multi-function Electric Bed

## DA-1 多功能电动床



全长	全宽	床面高度	内径长度	前后倾斜角度
2180mm	1080mm	470mm	1900mm	12°
背部可升角度	腿部可升角度	整体升降高度	内径宽度	承重
75°	45°	260mm	900mm	≥250kg

### 产品特性:

床板采用美国制电木板,可透X光,坚固耐用。  
 床头、床尾、护栏采用进口ABS高级工程塑料注塑成型,外形美观,表面光滑平整,坚固耐用,清洗方便。  
 床头床尾两侧护栏配有嵌入式按键,方便患者及医护人员操作。  
 Linak电动马达,运行无噪音,配置不断电装置。  
 背部折起角度0-75°,腿部折起角度0-45°,整体升降470-730mm,床体可前后倾斜0-12°  
 承重: ≥250KG。  
 CPR单手操作“心肺复苏位”快速释放把手。  
 豪华中控静音脚轮直径125mm,移动灵活,制动可靠。  
 输液架(选配),床体两侧配有引流挂钩。

The bed sheet panel is made of X-RAY transparent material, which is imported from USA, stable and reliable.  
 High quality ABS engineering plastic head/foot boards and side rails beautiful and generous, which is easily detachable and stable.  
 Build-in control panels on the both side of the headboard side rails are easy to operate for both the patient and nurse.  
 LINAK safety voltage motor, noiseless, equipped with UPS system.  
 Motor control high/low rest:470-730mm, back rest:0-75°, knee rest: 0-45°, trendelenburg and reversetrendelenburg :0-12°  
 Load capacity: ≥250kg  
 CPR one-handed operation CPR a "quick release handle".  
 Luxurious single lock castors with diameter 125mm.  
 IV Pole (option), the drainage hook at two side of the bed.





## Five-function electric nursing bed

DA-2 五功能电动床



全长	全宽	床面高度	内径长度	前后倾斜角度
2220mm	1060mm	460mm	1900mm	12°
背部可升角度	腿部可升角度	整体升降高度	内径宽度	承重
75°	45°	180mm	900mm	≥250kg

### 产品特性:

床板采用冷轧钢板整体冲压成型，坚固耐用，床板之间采用软骨链接装置，呈弧形过渡，符合人体工程学原理。ABS床头、床尾、护栏采用进口高级工程塑料注塑成型。外形美观，装卸自如，坚固耐用，清洗方便。Linak电动马达，运行无噪音，配置不断电装置。承重：≥250KG。背部折起角度0-75°，腿部折起角度0-45°，整体升降460-640mm，床体可前后倾斜0-12°。豪华吸塑底罩，中控静音轮直径125mm。输液架（选配），床体两侧配有引流挂钩。

Bed surface is made of cold-rolled steel by impact molding, strong and durable; Aluminum alloy device makes the bending of the plat-form more smooth to let the patient feel more comfortable; High quality ABS engineering plastic detachable head/foot boards are beautiful and generous, which can be freely installed, removed and stable. LINAK safety voltage motor, noiseless, equipped with UPS system. Load capacity: ≥250kg. Back rest: 0-70°, Knee rest: 0-45°, High/low: 460-640mm. trendelenburg & reverse trendelenburg: 0-12° Luxurious ABS anti-dust cover. A diameter of 125mm luxury mute central. IV Pole(option), the drainage hook at two side of the bed.

## Five-function electric nursing bed

DA-2-1 五功能电动床



全长	全宽	床面高度	内径长度	前后倾斜角度
2180mm	1110mm	520mm	1900mm	12°
背部升降角度	腿部升降角度	整体升降高度	内径宽度	承重
75°	45°	190mm	900mm	≥250kg

### 产品特性:

床板采用冷轧钢板整体冲压成型。ABS床头、床尾、护栏采用进口高级工程塑料注塑成型。Linak电动马达，运行无噪音，配置不断电装置。承重：≥250KG。背部折起角度0-75°，腿部折起角度0-45°，整体升降520-710mm，床体可前后倾斜0-12°。豪华吸塑底罩，中控静音轮直径125mm。输液架（选配），床体两侧配有引流挂钩。

Bed surface is made of cold-rolled steel by impact molding, strong and durable; Aluminum alloy device makes the bending of the plat-form more smooth to let the patient feel more comfortable; High quality ABS engineering plastic detachable head/foot boards are beautiful and generous, which can be freely installed, removed and stable. LINAK safety voltage motor, noiseless, equipped with UPS system. Load capacity: ≥250kg. Back rest: 0-75°, Knee rest: 0-45°, High/low: 710-520mm. trendelenburg & reverse trendelenburg: 0-12° Luxurious ABS anti-dust cover. Four diameter of 125mm luxury mute central lock castors. IV Pole(option), the drainage hook at two side of the bed.



## Five-function electric nursing bed DA-3 五功能电动床

全长	全宽	床面高度	内径长度	前后倾斜角度
2130mm	1010mm	420mm	2000mm	12°
背部升降角度	腿部升降角度	整体升降高度	内径宽度	承重
75°	45°	180mm	900mm	≥250kg

### 产品特性:

床板采用冷轧钢板整体冲压成型，坚固耐用。  
ABS床头、床尾、护栏采用进口高级工程塑料注塑成型，外形美观，装卸自如，坚固耐用，清洗方便，护栏上配有角度指示器，可加装护栏控制面板。  
ABS四片叶状护栏，阻尼升降，随动设计，保护患者使用安全。  
Linak电动马达，运行无噪音，配置不断电装置。  
护栏操作面板，人性化设计，设有患者操作权限。  
中控静音轮直径125mm。  
承重：≥250KG。  
背部折起角度0-75°，腿部折起角度0-45°。整体升降420-600mm，床体可前后倾斜0-12°。  
输液架（选配），床体两侧配有引流挂钩。

The bed surface using cold-rolled steel sheet a stamping forming, strong and durable;  
High quality ABS engineering plastic detachable head/foot boards are beautiful and generous, which can be freely installed, removed and stable.  
ABS four pieces side rail, damping lifting, with the dynamic design, to protect safety of the patients.  
LINAK safety voltage motor, noiseless, equipped with UPS system.  
Fence panels do gymnastics, hommization design with patient per-mission to do gymnastics.  
Four diameter of 125mm luxury mute central lock castors.  
Load capacity: ≥250kg  
Back rest:0-75°, Knee rest: 0-45°, High/low range:420-600mm.trendelenburg & reverse trendelenburg; 0-12°  
IV Pole(option), the drainage hook at two side of the bed.



## Five-function electric nursing bed DA-4-1 五功能电动床



全长	全宽	床面高度	内径长度	前后倾斜角度
2140mm	1070mm	460mm	2020mm	12°
背部升降角度	腿部升降角度	整体升降高度	内径宽度	承重
75°	45°	230mm	900mm	≥250kg

### 产品特性:

床板采用冷轧钢板整体冲压成型。  
复合床头，护栏采用进口高级工程塑料注塑成型。  
Linak电动马达，运行无噪音，配置不断电装置。  
承重：≥250KG。  
背部折起角度0-75°，腿部折起角度0-45°。整体升降460-690mm，床体可前后倾斜0-12°。  
豪华中控静音脚轮直径125mm。  
输液架（选配），床体两侧配有引流挂钩。

Bed surface is made of cold-rolled steel by impact molding, strong and durable;  
High quality ABS engineering plastic detachable head/foot boards are beautiful and generous, which can be freely installed, removed and stable.  
LINAK safety voltage motor, noiseless, equipped with UPS system.  
Four diameter of 125mm luxury mute central lock castors.  
Load capacity: ≥250kg  
Back rest:0-75°, Knee rest: 0-45°, High/low range:460-690mm.trendelenburg & reverse trendelenburg; 0-12°  
IV Pole(option), the drainage hook at two side of the bed.





## Five-function electric bed with weight reading system DA-4 五功能称重电动床



全长	全宽	床面高度	内径长度	前后倾斜角度
2250mm	1110mm	440mm	1900mm	12°
背部升降角度	腿部升降角度	可升高度	内径宽度	承重
75°	45°	170mm	900mm	≥250kg

### 产品特性:

ABS床头、床尾、护栏均采用高级工程塑料注塑。  
床板采用冷轧钢板整体冲压成型。  
床头、床尾和护栏(可上下定位,可调换)。  
CPR快速复位系统采用物理结构,不受电源控制,紧急情况下可以让靠背迅速回到初始位置。  
床头床尾、护栏配有嵌入式按键,方便患者及医护人员操作。  
Linak电动马达,运行无噪音,配置不断电装置。  
称重系统可监测患者每天的体重变化,测量精度±0.05kg。  
承重: ≥250Kg。  
豪华中控静音轮直径125mm,移动灵活,制动可靠。  
背部折起角度0-75°,腿部折起角度0-45°,整体升降440-610mm,床体前后倾斜0-12°。  
输液架(选配),床体两侧配有引流挂钩

High quality ABS engineering plastic detachable head/foot boards and side rails are beautiful and generous, which can be freely installed, removed and stable.  
Bed surface is made of cold-rolled steel by impact molding, strong and durable;  
Headboards, foot boards and side rails can be up and down & exchangeable.  
CPR devices allows the nursing staff to instantly lower the backrest to a full flat from any degree of elevation in order to save vital in critical situation.  
Build-in control panels on the both side of the head end side rails are easy to operate for both the patient and nursing stuff.  
LINAK safety voltage motor, noiseless, equipped with UPS system.  
Weighing system can monitor the patient's body weight per day, the measurement accuracy ± 0.05kgs.  
Load capacity: ≥250kg;  
Equipped with diameter of 125mm luxury mute central lock, mobile flexible, castors.  
Back rest: 0-75°, Knee rest: 0-45°, High/low: 610-440mm. trendelenburg & reverse trendelenburg: 0-12°  
IV Pole(option), the drainage hook at two side of the bed.





## Five-function electric nursing bed

### DA-5-1 五功能电动床



全长	全宽	床面高度	内径长度	前后倾斜角度
2200mm	1120mm	485mm	2060mm	12°
背部升降角度	腿部升降角度	整体升降高度	内径宽度	承重
75°	45°	255mm	900mm	≥250kg

#### 产品特性:

床板采用冷轧钢板整体冲压成型。  
 ABS床头、床尾、护栏采用进口高级工程塑料注塑成型。  
 Linak电动马达，运行无噪音，配置不断电装置。  
 承重：≥250KG。  
 背部折起角度0-75°，腿部折起角度0-45°。整体升降485-740mm，床体可前后倾斜0-12°。  
 豪华中控静音轮直径125mm。  
 输液架（选配），床体两侧配有引流挂钩。

Bed surface is made of cold-rolled steel by impact molding;  
 High quality ABS engineering plastic detachable head/foot boards and side rails are beautiful and generous, which can be freely installed, removed and stable.  
 LINAK safety voltage motor, noiseless, equipped with UPS system.  
 Equipped with diameter of 125mm luxury mute central lock, mobile flexible caster. Load capacity: ≥250kg  
 Back rest: 0-75°, Knee rest: 0-45°, High/low range: 485-740mm trendelenburg & reverse trendelenburg: 0-12°  
 IV Pole(option), the drainage hook at two side of the bed.



# Five-function electric nursing bed

## DA-7 五功能电动床



全长	全宽	床面高度	内径长度	前后倾斜角度
2160mm	900mm	410mm	1980mm	12°
背部升降角度	腿部升降角度	整体升降高度	内径宽度	承重
75°	45°	190mm	820mm	≥250kg

### 产品特性:

ABS 床头, 床尾, 装卸自如, 床板采用冷轧钢板整体冲压成型, 坚固耐用。  
 ABS 床头、床尾、采用进口高级工程塑料注塑成型, 护栏采用不锈钢立柱六档护栏。  
 床架体采用型钢焊接而成, 牢固可靠。  
 表面除锈, 静电喷涂, 抗老化, 不生锈。  
 不锈钢护栏整体采用铝材和不锈钢材料制成, 轻便耐用, 易清洁, 独特的防夹手设计。  
 承重: ≥250KG。  
 背部折起角度0-75°, 腿部折起角度0-45°。整体升降410-600mm, 床体可前后倾斜0-12°。  
 Linak 电动马达, 运行无噪音, 配置断电装置。  
 中控静音轮直径125mm, 移动灵活, 制动可靠  
 输液架(选配), 床体两侧配有引流挂钩。

ABS head/foot boards can be freely installed and removed, the bed surface is made of cold-rolled steel by overall ramming formation at one time which is stable and reliable;  
 ABS head/foot boards are shaped by injection molding of imported high grade engineer plastic;  
 The bed frame is welded by steel section which is stable and reliable;  
 The surface treated with advanced electrostatic plastic spray, which is anti-aging and anti-rust;  
 The stainless steel side rail is made of aluminum and stainless steel which is light and durable, easy to clean, including unique design splines.  
 Load capacity: ≥250kg  
 Back rest: 0-75°, Knee rest: 0-45°, High/low; 410-600mm, trendelenburg & reverse trendelenburg: 0-12°;  
 LINAK safety voltage motor, noiseless, equipped with UPS system  
 Equipped with a diameter of 125mm luxury mute central lock, mobile flexible, brake reliable.  
 IV Pole(option), the drainage hook at two side of the bed.







## Three-function electric bed DA-8 三功能电动床



全长	全宽	床面高度	内径长度
2110mm	1080mm	460mm	2000mm
背部升降角度	腿部升降角度	整体升降高度	内径宽度
75°	45°	230mm	900mm

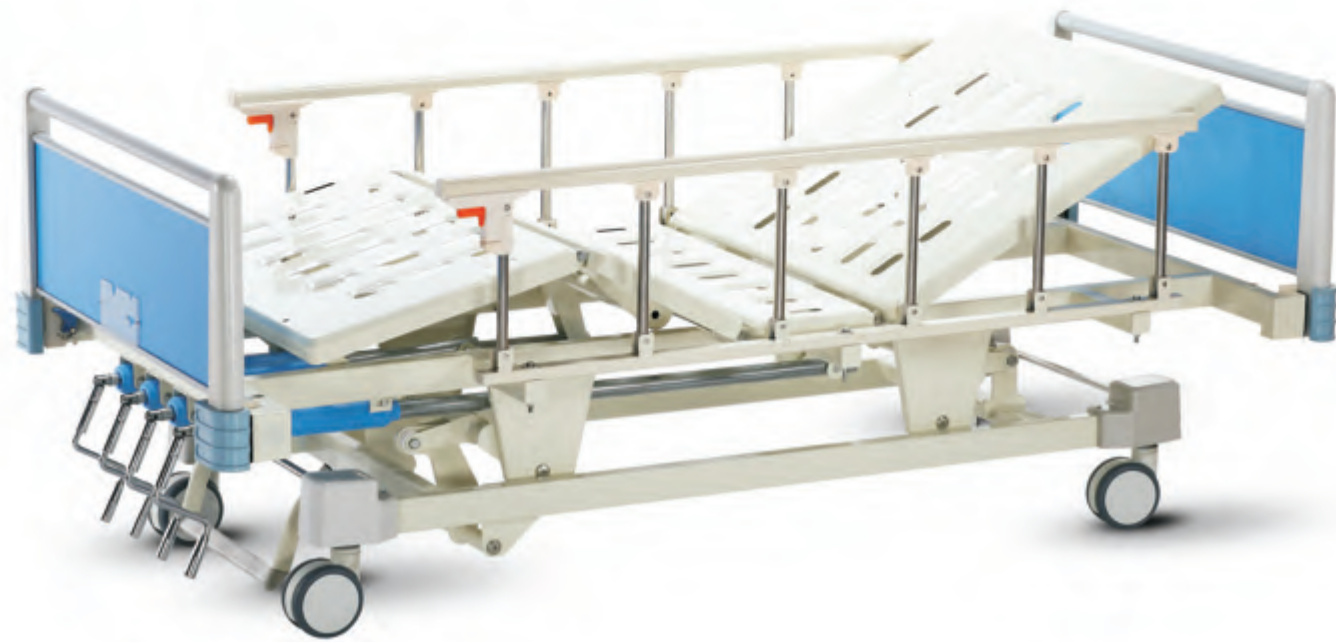
### 产品特性:

床体采用型钢焊接而成，表面除锈，静电喷涂，抗老化，不生锈。  
床板采用冷轧钢板整体冲压成型。  
ABS床头、床尾、护栏采用进口高级工程塑料注塑成型，外形美观，装卸自如，坚固耐用。  
Linak电动马达，运行无噪音，配置不断电装置。  
独立刹车静音轮直径125mm，移动灵活，制动可靠。  
承重：≥250KG。  
背部折起角度0-75°，腿部折起角度0-45°，整体升降460-690mm。  
输液架（选配），床体两侧配有引流勾

Bed frame welded by profile steel which are stable and reliable. The bed platform is treated with advanced electrostatic plastic-spray which is anti-aging and anti-rust.  
High quality ABS engineering plastic head/foot boards beautiful and generous, which is easily detachable and stable.  
LINAK safety voltage motor, noiseless, equipped with UPS system.  
Equipped with diameter of 125mm luxury mute central, mobile flexible, castors.  
Load capacity: ≥250kg  
Back rest: 0-75°, Knee rest: 0-45°, High/low: 460-690mm.  
IV Pole (option), the drainage hook at two side of the bed.



Four cranks Five function manual bed  
A-2 四摇五功能床



尺寸(Size):2140\*980\*420-720mm

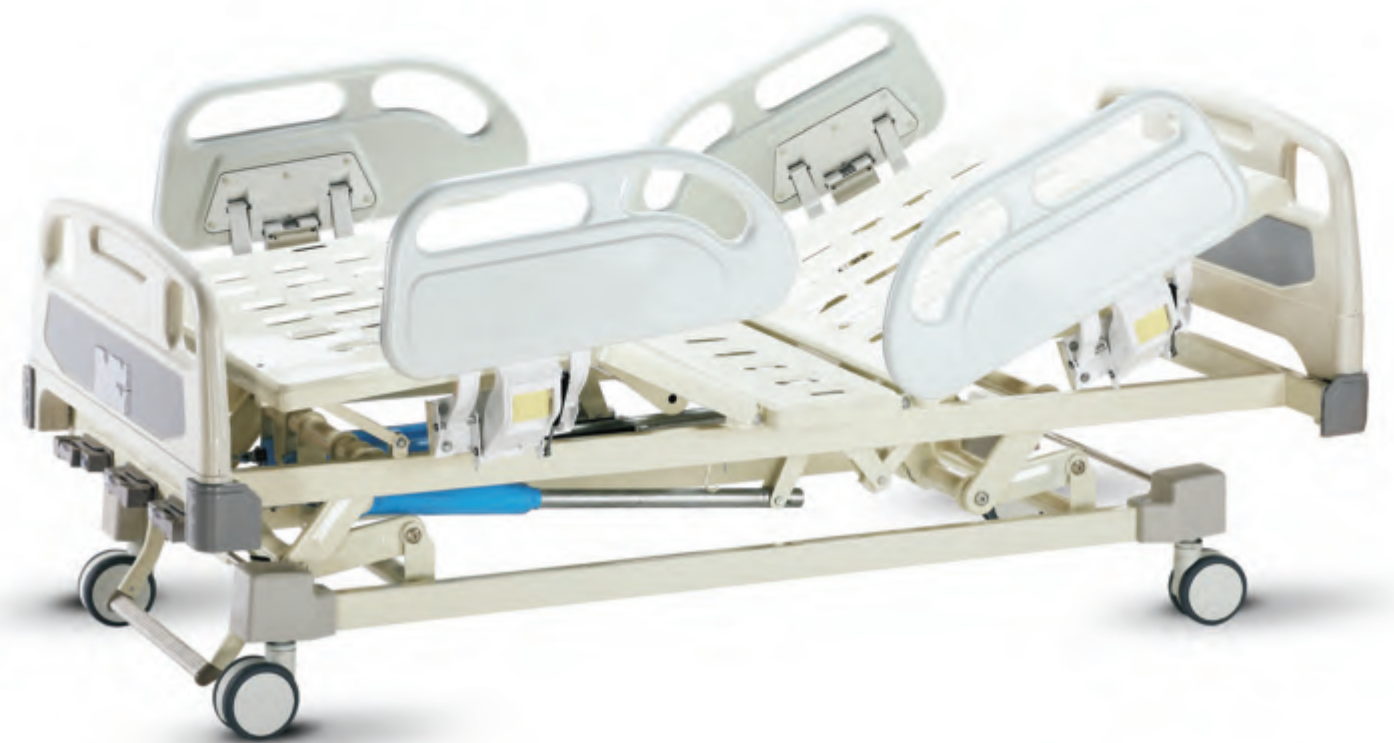


Four cranks Five function manual bed  
A-2-1 四摇五功能床  
尺寸(Size) : 2140\*980\*420-720mm



Three cranks Five function manual bed  
A-2-2 三摇五功能床  
尺寸(Size) : 2140\*980\*420-720mm

Three function manual bed  
A-3ABS 床头三摇床



尺寸(Size):2120\*1080\*460-690mm



Three function manual bed  
A-3-1 ABS床头三摇床  
尺寸(Size) : 2120\*1080\*460-690mm



Three function manual bed  
A-3-2 ABS复合床头三摇床  
尺寸(Size) : 2140\*1100\*430-665mm



Three function manual bed  
A-5 ABS 床头三摇床



尺寸(Size):2140\*950\*430-665mm



Three function manual bed  
A-5-1 ABS床头三摇床  
尺寸(Size) , 2140\*950\*430-665mm



Three function manual bed  
A-5-2 ABS床头三摇床  
尺寸(Size) , 2140\*950\*430-665mm

Two cranks manual bed  
B-1 ABS 床头双摇床



尺寸(Size):2200\*1120\*460-760mm



Two cranks manual bed  
B-1-1 ABS床头双摇床  
尺寸(Size) , 2140\*1000\*500mm



Two cranks manual bed  
B-1-2 ABS床头双摇床  
尺寸(Size) , 2140\*1000\*500mm





Two cranks orthopaedics bed  
ABS 床头双摇牵引床



## Two cranks orthopaedics bed C-8-1 ABS 床头双摇牵引床



全长	全宽	内径长度	床面高度
2220mm	1120mm	2080mm	460mm
背部升降角度	腿部升降角度	内径宽度	
75°	45°	900mm	

### 产品特性:

ABS床头、床尾、床板、护栏均采用高级工程塑料注塑成型。  
ABS折叠手摇柄。  
豪华中控静音轮直径125mm  
手动升降系统，实现背部升降、腿部曲升，背部：0-75度，腿部：0-45度。  
承重：≥250kg，  
输液架（选配），床体两侧配有引流挂钩。

High quality ABS engineering plastic head/foot boards beautiful and generous, which is easily detachable and stable.  
ABS folded cranks.  
Luxurious central lock castors with diameter 125mm.  
Luxurious ABS anti-dust cover.  
Manual control, back rest:0-75°, knee rest: 0-45°  
Load capacity: ≥250kg  
IV Pole (option), the drainage hook at two side of the bed.





Two cranks manual bed  
B-4 ABS复合床头双摇床



尺寸(Size):2120\*950\*500mm



Two cranks manual bed  
B-5ABS 床头双摇床



尺寸(Size):2130\*950\*500mm



Two cranks manual bed  
B-4-1 ABS复合床头双摇床  
尺寸(Size) : 2120\*950\*500mm



Two cranks manual bed  
B-4-2 ABS床头双摇床  
尺寸(Size) : 2120\*950\*500mm



Two cranks manual bed  
B-5-1 ABS床头双摇床  
尺寸(Size) : 2130\*950\*500mm



Two cranks manual bed  
B-5-2 ABS床头双摇床  
尺寸(Size) : 2150\*940\*500mm



Two cranks manual bed  
B-6 ABS床头双摇床

尺寸(Size) : 2200\*950\*500mm



Two cranks manual bed  
B-7 ABS床头双摇床

尺寸(Size) : 2200\*950\*500mm



Two cranks manual bed  
B-8 ABS床头双摇床

尺寸(Size) : 2120\*980\*500mm



Single cranks manual bed  
B-9 ABS床头单摇床

尺寸(Size) : 2140\*950\*500mm



Single cranks manual bed  
B-9-1 ABS床头单摇床

尺寸(Size) : 2140\*950\*500mm



Single cranks manual bed  
B-9-2 ABS床头单摇床

尺寸(Size) : 2140\*950\*500mm





## Three-function Electric Home care Bed DB-1 家居式三功能电动护理床



## Two-function electric home care bed DB-4 家居式两功能电动床



全长	全宽	床面高度	内径长度
2060mm	960mm	500mm	1900mm
背部升降角度	腿部升降角度	承重	内径宽度
75°	45°	≥250kg	820mm

### 产品特性:

床头、床尾围挡选用优质天然木材加工而成(樟木、榉木、橡木、黑胡桃)  
床板采用冷轧钢板整体冲压成型。  
Linak电动马达,运行无噪音,配置不断电装置。  
独立刹车静音轮直径125mm。  
电动升降系统,实现背部升降、腿部曲升。背部:0-75度,腿部:0-45度。  
承重≥250kg。  
输液架(选配),床体两侧配有引流挂钩。

### Product Features:

Bed headboards enclosure made of high quality natural wood processing (Camphorwood, Beech, Oak, Black walnut)  
Bed frame welded by profile steel which are stable and reliable. The bed platform is treated with advanced electrostatic plastic-spray which is anti-aging and anti-rust.  
LINAK safety voltage motor, noiseless, equipped with UPS system.  
Equipped with diameter of 125mm luxury mute single lock, mobile flexible, castors.  
Motor control back rest:0-75°, knee rest: 0-45°  
Load capacity: ≥250kg  
IV Pole(option), the drainage hook at two side of the bed.





Two-function electric home care bed  
DB-4 家居式两功能电动床





Three-function manual home care bed  
DB-5 家居式三摇床



## Three-function manual home care bed DB-5 家居式三摇床



全长	全宽	床面高度	内径长度
2060mm	960mm	500mm	1900mm
背部升降角度	腿部升降角度	承重	内径宽度
75°	45°	≥250kg	820mm

### 产品特性:

床头、床尾、围挡选用优质天然木材加工而成（樟木、榉木、橡木、黑胡桃）

床板采用冷轧钢板剪切焊接成型。

ABS折叠手摇柄

双腿支撑结构，固定稳定、移动方便。

手动升降系统，实现背部升降、腿部曲升。背部：0-75度，腿部：0-45度，整体升降500-650mm。

承重：≥250kg。

输液架（选配），床体两侧配有引流挂钩。

Product features:

Head board and foot board and enclosure made of high quality natural wood processing (camphor wood, beech, oak, black walnut);

Bed frame welded by profile steel which are stable and reliable. The bed platform is treated with advanced electrostatic plastic-spray which is anti-aging and anti-rust.

ABS folded cranks.

Double legs supporting structure is fixation stability and mobile flexibly.

Manual control High/low range:650/500mm,back rest:0-75° ,knee rest: 0-45° .

Load capacity: ≥250kg

IV Pole(option) ,the drainage hook at two side of the bed.

## Two function manual home care bed DB-6 家居式双摇床



全长	全宽	床面高度	内径长度
2060mm	960mm	500mm	1900mm
背部升降角度	腿部升降角度	最大承重	内径宽度
75°	45°	250kg	820mm

### 产品特性:

床头、床尾、围挡选用优质天然木材加工而成，（樟木、榉木、橡木、黑胡桃）

床板采用冷轧钢板整体冲压成型。

ABS折叠手摇柄。

独立刹车静音轮直径125mm。

手动升降系统，实现背部升降、腿部曲升，背部：0-75度，腿部：0-45度。

承重：≥250kg。

输液架（选配），床体两侧配有引流挂钩。

Product features:

Head board and foot board and enclosure made of high quality natural wood processing (camphor wood, beech, oak, black walnut);

Bed frame welded by profile steel which are stable and reliable. The bed platform is treated with advanced electrostatic plastic-spray which is anti-aging and anti-rust.

ABS folded cranks.

125mm: Equipped with diameter of 125mm luxury mute single lock, mobile flexible, castors.

Manual control back rest:0-75° ,knee rest: 0-45° .

Load capacity: ≥250kg

IV Pole(option) ,the drainage hook at two side of the bed.





Two function manual home care bed  
DB-6 家居式双摇床



## Two function manual home care bed

### DB-6-1 家居式双摇床



#### 产品特性:

床头、床尾围档选用优质天然木材加工而成, (樟木、榉木、橡木、黑胡桃)  
床板采用冷轧钢板整体冲压成型。

ABS折叠手摇柄。

独立刹车静音轮直径125mm。

手动升降系统, 实现背部升降、腿部曲升, 背部: 0-75度, 腿部: 0-45度。

承重: ≥250kg。

输液架(选配), 床体两侧配有引流挂钩。

Product features:

Head board and foot board and enclosure made of high quality natural wood processing (camphor wood, beech, oak, black walnut);

Bed frame welded by profile steel which are stable and reliable. The bed platform is treated with advanced electrostatic plastic-spray which is anti-aging and anti-rust.

ABS folded cranks.

Equipped with diameter of 125mm luxury mute single lock, mobile flexible, castors.

Manual control back rest: 0-75°, knee rest: 0-45°.

Load capacity: ≥250kg

IV Pole(option), the drainage hook at two side of the bed.

全长	全宽	床面高度	内径长度
2060mm	960mm	500mm	1900mm
背部升降高度	腿部升降高度	承重	内径宽度
75°	45°	≥250kg	820mm







Five function electric folding bed  
DB-7 家居式五功能电动折叠床



## Five function electric folding bed DB-7 家居式五功能电动折叠床



全长	全宽	床面高度	内径长度	前后倾斜角度
2120mm	890mm	260mm	1900mm	12°
背部升降角度	腿部升降角度	整体可升高度	内径宽度	承重
75°	45°	400mm	820mm	≥250kg

### 产品特性:

床头、床尾围挡选用优质天然木材加工而成(樟木、榉木、橡木、黑胡桃)  
配备直径125mm豪华静音中控脚轮,移动灵活,制动可靠,  
电动升降系统,实现背部升降、腿部曲升,背部:0-75度,腿部:0-45度,整体升降260-660mm,前后倾斜0-12度,折叠功能。  
一键式折叠功能,操作简单,节省空间,方便移动、储存。  
承重≥250kg。

#### Product Features

Bed frame welded by profile steel which are stable and reliable. The bed platform is treated with advanced electrostatic plastic-spray which is anti-aging and anti-rust.  
Equipped with diameter of 125mm luxury mute central lock, mobile flexible, castors.  
Motor control high/low rest:260-660mm, back rest:0-75°, knee rest: 0-45°, trendelenburg/reversetrendelenburg :0-12°  
Load capacity: ≥250kg  
One-touch folding function, easy operation, space-saving, easy to move, store.

## Three function electric bed DB-9 家居式三功能电动床



全长	全宽	床面高度	内径长度
2060mm	1010mm	300mm	1900mm
背部升降角度	腿部升降角度	整体可升高度	内径宽度
75°	45°	300mm	880mm

### 产品特性:

床头、床尾围挡选用优质天然木材加工而成(樟木、榉木、橡木、黑胡桃)。  
床板采用金属网格,表面静电喷涂,坚固耐用。  
护栏采用优质碳钢加工而成,开放式设计,外形美观,不占空间,防夹手设计。  
Linak电动马达,运行无噪音,配置不断电装置。  
电动升降系统,实现背部升降、腿部曲升。背部:0-75度,腿部:0-45度,整体升降300-600mm。  
承重:≥250kg。  
输液架(选配),床体两侧配有引流挂钩。

#### Product Features

Bed headboards enclosure made of high quality natural wood processing (Camphorwood, Beech, Oak, Black walnut)  
Bed sheet is metal mesh, electrostatic spraying. It is durable.  
Equipment with a diameter of 125mm luxury mute central lock, mobile flexible, brake reliably.  
LINAK safety voltage motor, noiseless, equipped with UPS system.  
Motor control high/low rest:300-600mm, back rest:0-75°, knee rest: 0-45°  
IV Pole(option), the drainage hook at two side of the bed.





Multi-fuctional obstetric bed

DS-6 综合产床

尺寸(Size):  $1900 \pm 50 \times 600 \pm 10 \times (700-950) \pm 50\text{mm}$



Electric operating table

DS-7 电动手术台

尺寸(Size):  $2000 \pm 50 \times 500 \pm 20 \times (700-950) \pm 50\text{mm}$







Semi-fowler bed with stainless steel headboards  
B-10 不锈钢床头单摇床  
尺寸(Size) : 2030\*900\*500mm



Flat bed with stainless steel headboards  
B-10-1 不锈钢床头平床  
尺寸(Size) : 2030\*900\*500mm



Flat bed with stainless steel headboards  
B-10-2 不锈钢床头平床  
尺寸(Size) : 2030\*900\*500mm



Pediatric Bed  
D-1 儿童床  
尺寸(Size) : 1900\*900\*580mm



Pediatric Bed  
D-2 儿童床  
尺寸(Size) : 1900\*900\*580mm



Pediatric Bed  
D-3 儿童床  
尺寸(Size) : 1380\*850\*580mm



Plastic-sprayed semi-fowler bed  
B-11 喷塑单摇床  
尺寸(Size) : 2030\*900\*500mm



Plastic-sprayed flat bed  
B-11-1 喷塑平床  
尺寸(Size) : 2030\*900\*500mm



Flat bed with ABS headboards  
B-11-2 ABS床头平床  
尺寸(Size) : 2140\*900\*500mm



Infant Bed  
D-4 婴儿床  
尺寸(Size) : 830\*370\*900mm



Infant Bed  
D-5 婴儿床  
尺寸(Size) : 890\*490\*910-1050mm



Infant Bed  
D-6 婴儿床  
尺寸(Size) : 820\*570\*880mm



Examination Couch  
C-1 检查床  
尺寸(Size) : 1900\*650\*700mm



Examination Couch  
C-2 检查床  
尺寸(Size) : 1900\*650\*700mm



Examination Couch  
C-3 检查床  
尺寸(Size) : 1900\*650\*700mm



Connecting Stretcher  
E-1 手术对接车  
尺寸(Size) : 3650\*640\*640-970mm



Transport Stretcher  
E-2 转运车  
尺寸(Size) : 2120\*800\*630-930mm



Transport Stretcher  
E-3 转运车  
尺寸(Size) : 1930\*640\*500-900mm



Gynecological Examining Table  
C-9 妇科检查床  
尺寸(Size) : 1680\*660\*800mm



Gynecological Examining Table  
C-9-1 妇科检查床  
尺寸(Size) : 1680\*660\*810mm



Gynecological Examining Table  
C-9-2 妇科检查床  
尺寸(Size) : 1680\*660\*810mm



Transport Stretcher  
E-4 转运车  
尺寸(Size) : 2130\*750\*630-950mm



Stainless steel stretcher (Height adjustable)  
E-5 不锈钢抢救车  
尺寸(Size) : 1950\*650\*680-900mm



Stainless steel stretcher  
E-6 不锈钢担架车  
尺寸(Size) : 1950\*650\*780mm





Stainless steel file of case records with 40-folder  
E-7 不锈钢病历夹车 (40格)  
尺寸(Size): 665\*390\*880mm



Stainless steel emergency trolley  
E-8 不锈钢抢救车  
尺寸(Size): 650\*400\*790mm



Stainless steel asepsis trolley  
E-9 不锈钢无菌车  
尺寸(Size): 1250\*650\*860mm



Emergency Trolley  
E-19 急救车  
尺寸(Size): 850\*520\*950mm



Anesthesia Trolley  
E-20 麻醉车  
尺寸(Size): 850\*520\*950mm



Anesthesia Trolley  
E-21 麻醉车  
尺寸(Size): 850\*520\*950mm



Flat bed with stainless steel headboards  
E-10 不锈钢送物车  
尺寸(Size): 1200 x 800 x 820mm



Instrument Trolley  
E-11 不锈钢治疗车  
尺寸(Size): 660\*440\*870mm



Instrument Trolley  
E-12 不锈钢治疗车  
尺寸(Size): 640\*420\*800mm



IV Treatment Trolley  
E-22 输液车  
尺寸(Size): 850\*520\*950mm



Treatment Trolley  
E-23 治疗车  
尺寸(Size): 850\*520\*950mm



Medicine Trolley  
E-24 送药车  
尺寸(Size): 870\*520\*1030mm



Stainless steel fan-shaped working table  
E-13 不锈钢扇形器械车  
尺寸(Size): 1350\*450\*800mm



Laundry Collecting Trolley  
E-14 不锈钢晨护车  
尺寸(Size): 950\*500\*900mm



25 Case history folder trolley  
E-15 病历夹车 (25格)  
尺寸(Size): 450\*410\*950mm



Laundry Collecting Trolley  
E-25 晨护车  
尺寸(Size): 610\*470\*920mm



Treatment Trolley  
E-26 钢塑多功能推车  
尺寸(Size): 730\*480\*900mm



Treatment Trolley  
E-27 钢塑多功能推车  
尺寸(Size): 730\*480\*900mm



50 Case history folder trolley  
E-16 病历夹车 (50格)  
尺寸(Size): 750\*410\*980mm



Emergency Trolley  
E-17 急救车  
尺寸(Size): 790\*480\*920mm



Emergency Trolley  
E-18 急救车  
尺寸(Size): 790\*480\*920mm



Treatment Trolley  
E-28 钢塑多功能推车  
尺寸(Size): 730\*480\*900mm



Laundry Collecting Trolley  
E-29 污物车 (双桶)  
尺寸(Size): 800\*590\*890mm



Transport Trolley  
E-30 医用平板车  
尺寸(Size): 900\*600mm





Accompany Bed  
F-1 陪护床  
尺寸(Size): 1860\*750\*300mm



Deluxe Accompany Chair  
F-2 豪华陪护椅  
尺寸(Size): 2060\*650\*450mm



Deluxe Accompany Chair  
F-3 豪华陪护椅  
尺寸(Size): 186\*67\*41mm



Three Door Storage Lockers  
G-1 6门更衣柜  
尺寸(Size): 1850\*900\*450mm



Three Door Storage Lockers  
G-2 6门更衣柜  
尺寸(Size): 1850\*900\*450mm



12 Door Storage Lockers  
G-3 12门更衣柜  
尺寸(Size): 1850\*900\*450mm



Deluxe IV Chair  
F-4 豪华输液椅  
尺寸(Size): 770\*680\*1080mm



IV Chair  
F-5 输液椅  
尺寸(Size): 770\*680\*1080mm



Waiting Chair  
F-6 候诊椅  
尺寸(Size): 1750\*680\*780±3mm



Glass Door Office Cupboard  
G-4 钢制文件柜  
尺寸(Size): 1850\*900\*400mm



Stainless Steel Instrument Cupboard  
G-5 不锈钢器械柜  
尺寸(Size): 1850\*900\*400mm



Stainless Steel Medicine Cupboard  
G-6 不锈钢药品柜  
尺寸(Size): 1850\*900\*400mm



Waiting Chair  
F-7 候诊椅  
尺寸(Size): 1750\*680\*780±3mm



Revolving Nurse Stool  
F-8 不锈钢护士凳  
尺寸(Size):  $\Phi$ 360\*(460-700)mm



Revolving Nurse Stool  
F-9 不锈钢护士凳  
尺寸(Size):  $\Phi$ 320\*360+210(400-540)mm



Glass Door Office Cupboard  
G-7 钢制文件柜  
尺寸(Size): 1850\*900\*450mm



Stainless Steel Medicine Cupboard  
G-8 不锈钢药品柜  
尺寸(Size): 1850\*900\*400-250mm



36 Drawers Medicine Cabinet  
G-9 36斗中药柜  
尺寸(Size): 800\*960\*480mm



Revolving Nurse Stool  
F-10 不锈钢护士凳  
尺寸(Size):  $\Phi$ 330\*(470-600)mm



Revolving Nurse Stool  
F-11 不锈钢护士凳  
尺寸(Size):  $\Phi$ 380\*(470-600)mm



Revolving Nurse Stool  
F-12 不锈钢护士凳  
尺寸(Size):  $\Phi$ 290\*(480-680)mm



Food Trolley  
J-1 移动餐桌  
尺寸(Size): 880\*420\*730-1090mm



Food Trolley  
J-2 移动餐桌  
尺寸(Size): 820\*400\*730-1020mm



Food Trolley  
J-3 移动餐桌  
尺寸(Size): 820\*400\*730-1020mm





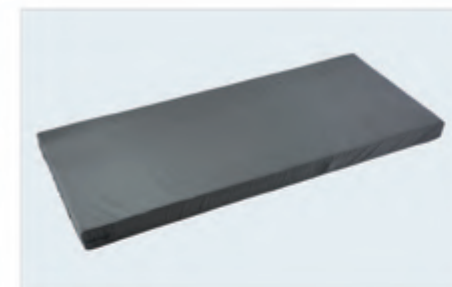
HPL Bedside Cabinet  
H-1 抗倍特床头柜  
尺寸(Size): 500\*500\*770mm



ABS & Steel Bedside Cabinet  
H-2 钢塑一体床头柜  
尺寸(Size): 510\*500\*720mm



ABS Bedside Cabinet  
H-3 ABS床头柜  
尺寸(Size): 480\*475\*780mm



Flat Mattress  
K-1 平床垫  
尺寸(Size): 1930\*890\*80mm



Mattress  
K-2 单摇床垫  
尺寸(Size): 1930\*890\*80mm



Mattress  
K-3 双摇床垫  
尺寸(Size): 1930\*890\*80mm



ABS Bedside Cabinet  
H-3-1 ABS床头柜  
尺寸(Size): 470\*475\*780mm



ABS Bedside Cabinet  
H-4 ABS床头柜  
尺寸(Size): 465\*475\*750mm



ABS Bedside Cabinet  
H-5 ABS床头柜(不锈钢面)  
尺寸(Size): 480\*475\*750mm



Anti-Bedsore Mattress  
K-4 防压疮床垫(奥地利进口)  
尺寸(Size): 1930\*890\*120mm



Anti-Bedsore Mattress  
K-5 防褥疮气垫  
尺寸(Size): 1970\*930\*75mm



Ambulance Mattress  
K-6 急救车床垫  
尺寸(Size): 1740\*540\*20mm



ABS Bedside Cabinet  
H-5-1 ABS床头柜(不锈钢面)  
尺寸(Size): 475\*475\*750mm



ABS Bedside Cabinet (Detachable)  
H-6 ABS床头柜(可拆)  
尺寸(Size): 480\*470\*750mm



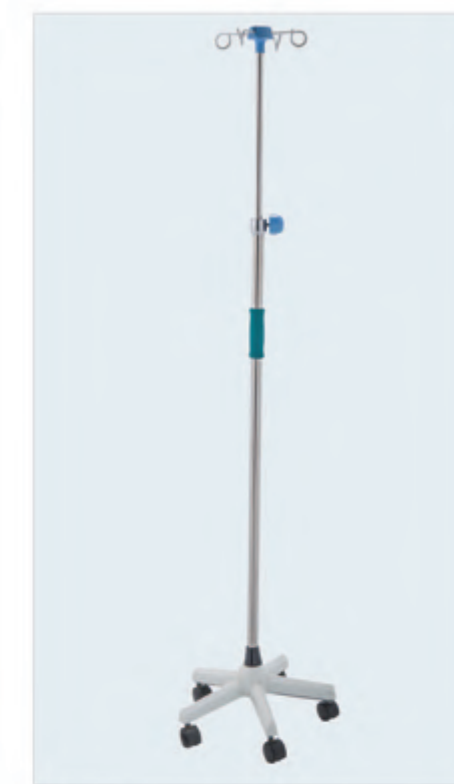
Wooden Bedside Cabinet  
H-7 木质床头柜  
尺寸(Size): 550\*500\*600mm



IV Stand  
L-1 不锈钢底座输液架  
高度可调(Hi-low): 1155-2070mm



IV Stand  
L-2 塑料底座输液架  
高度可调(Hi-low): 1175-2090mm



IV Stand  
L-3 铸铁底座输液架  
高度可调(Hi-low): 1230-2140mm



Wooden Bedside Cabinet  
H-8 木质床头柜  
尺寸(Size): 550\*450\*760mm



Bedside Cabinet (Steel)  
H-9 钢制喷塑床头柜(抗倍特面)  
尺寸(Size): 510\*470\*780mm



Bedside Cabinet  
H-10 钢制喷塑床头柜  
尺寸(Size): 500\*435\*780mm